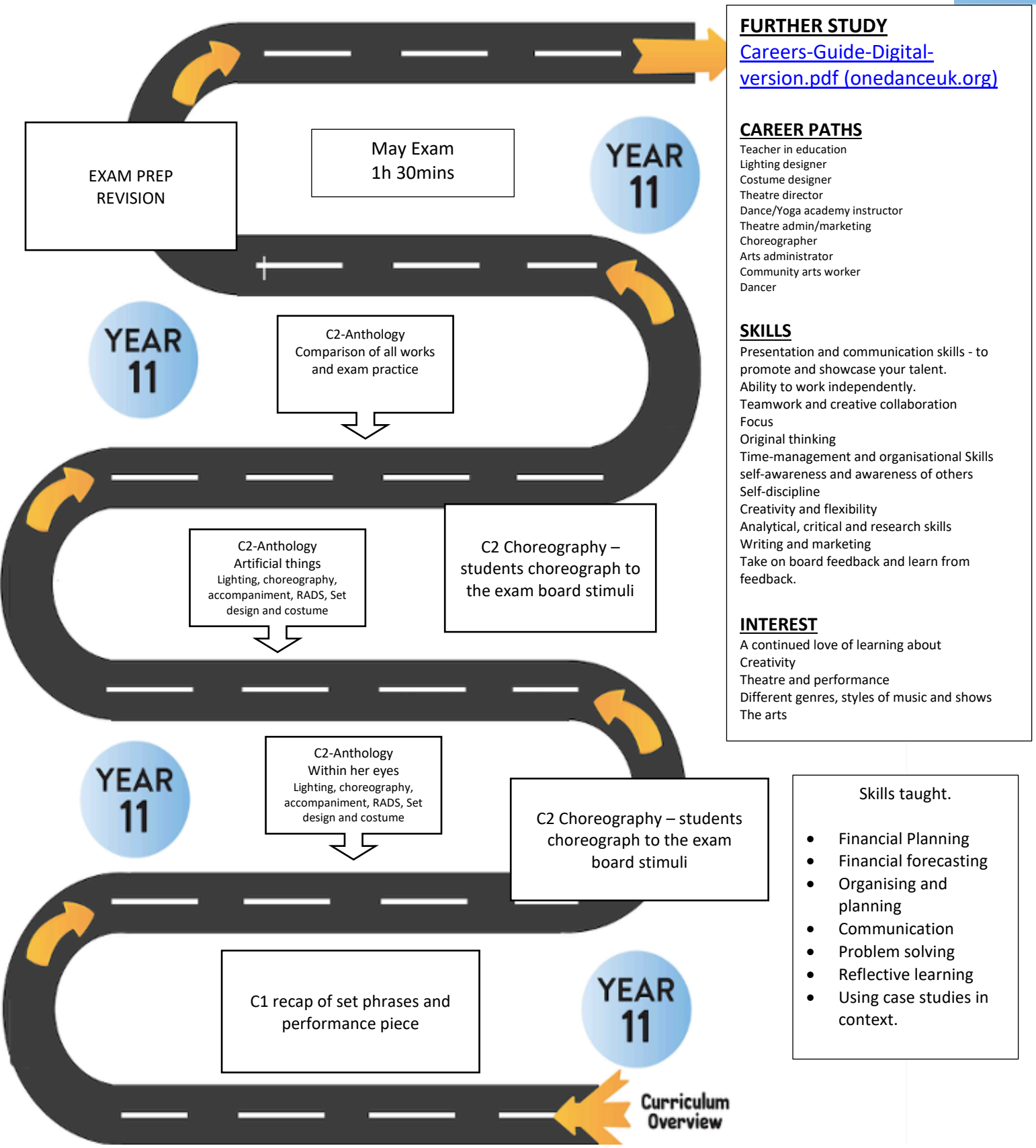




Learning Journey Map Year 11



FURTHER STUDY

[Careers-Guide-Digital-version.pdf \(onedanceuk.org\)](https://www.onedanceuk.org/Careers-Guide-Digital-version.pdf)

CAREER PATHS

- Teacher in education
- Lighting designer
- Costume designer
- Theatre director
- Dance/Yoga academy instructor
- Theatre admin/marketing
- Choreographer
- Arts administrator
- Community arts worker
- Dancer

SKILLS

- Presentation and communication skills - to promote and showcase your talent.
- Ability to work independently.
- Teamwork and creative collaboration
- Focus
- Original thinking
- Time-management and organisational Skills
- self-awareness and awareness of others
- Self-discipline
- Creativity and flexibility
- Analytical, critical and research skills
- Writing and marketing
- Take on board feedback and learn from feedback.

INTEREST

- A continued love of learning about
- Creativity
- Theatre and performance
- Different genres, styles of music and shows
- The arts

Skills taught.

- Financial Planning
- Financial forecasting
- Organising and planning
- Communication
- Problem solving
- Reflective learning
- Using case studies in context.

Component 3

1hr 30 Exam

The paper will be out of 80 marks.

Knowledge and understanding for

critical appreciation of professional set works.

Dance work	Dance company	Choreographer
<i>Artificial Things</i>	Stoppap Dance Company	Lucy Bennett
<i>A Linha Curva</i>	Rambert Dance Company	Itzik Galili
<i>Infra</i>	The Royal Ballet	Wayne McGregor
<i>Shadows</i>	Phoenix Dance Theatre	Christopher Bruce
<i>Within Her Eyes</i>	James Cousins Company	James Cousins
<i>Emancipation of Expressionism</i>	Boy Blue Entertainment	Kenrick H2O Sandy



Learning Journey Map Year 10

C2-Anthology
Shadows
Lighting, choreography,
accompaniment, RADS, Set
design and costume

Move on to
Year 11

C1 Choreography -
Learn and perform
"Yantra".

C2-Anthology
A Linha Curva
Lighting, choreography,
accompaniment, RADS, Set
design and costume

YEAR
10

C1 Choreography -
Learn and perform
"Yantra".

C2-Anthology
Infra
Lighting, choreography,
accompaniment, RADS, Set
design and costume

C1 Performance-
Learn and perform
"Scoop"

C1 Performance -
Learn and perform
"Scoop"

C1 Performance -
Learn and perform
"Breathe"

C1 Performance -
Learn and perform
"Scoop"

YEAR
10

C1 Performance -
Learn and perform
"Breathe"

C2-Anthology
E of E
Lighting, choreography,
accompaniment, RADS, Set
design and costume

C1 Performance -
Learn and perform
"Breathe"

Baseline assessment
Initial technique and
choreography training

YEAR
10

Curriculum
Overview

- Skills taught
- Ability to replicate actions.
 - Safe working practice
 - Physical skills;
 - Posture
 - Alignment
 - Balance
 - Coordination
 - Flexibility
 - Strength
 - Stamina
 - Isolation
 - Control
 - Extension
 - Mobility
 - Technical skills;
 - Action, Dynamic, Space, relationship content
 - Timing/rhythmic content
 - Expressive skills;
 - Projection
 - Focus
 - spatial awareness
 - Facial expression
 - phrasing
 - Mental skills; systematic repetition mental rehearsal discipline planning of rehearsal response to feedback capacity to improve.

Assessment.
The style of assessment for this course promotes deep learning through ensuring connections between knowledge and physical, mental, and expressive skills.

Ability to self-assess performance.
Ability to create and develop choreography.

Component 1

<p>What's assessed</p> <p>Performance</p> <ul style="list-style-type: none"> • Set phrases through a solo performance (approximately one minute in duration) • Duet/trio performance (three minutes in a dance which is a maximum of five minutes in duration) <p>Choreography</p> <ul style="list-style-type: none"> • Solo or group choreography – a solo (two to two and a half minutes) or a group dance for two to five dancers (three to three and a half minutes) <p>How it's assessed</p> <p>Internally marked and externally moderated</p> <p>Performance</p> <ul style="list-style-type: none"> • 30% of GCSE • 40 marks <p>Choreography</p> <ul style="list-style-type: none"> • 30% of GCSE • 40 marks

Component 2

<p>What's assessed</p> <ul style="list-style-type: none"> • Knowledge and understanding of choreographic processes and performing skills • Critical appreciation of own work • Critical appreciation of professional works
<p>How it's assessed</p> <ul style="list-style-type: none"> • 40% of GCSE • Written exam: 1 hour 30 minutes • 80 marks
<p>Questions</p> <p>Based on students' own practice in performance and choreography and the GCSE Dance anthology.</p>